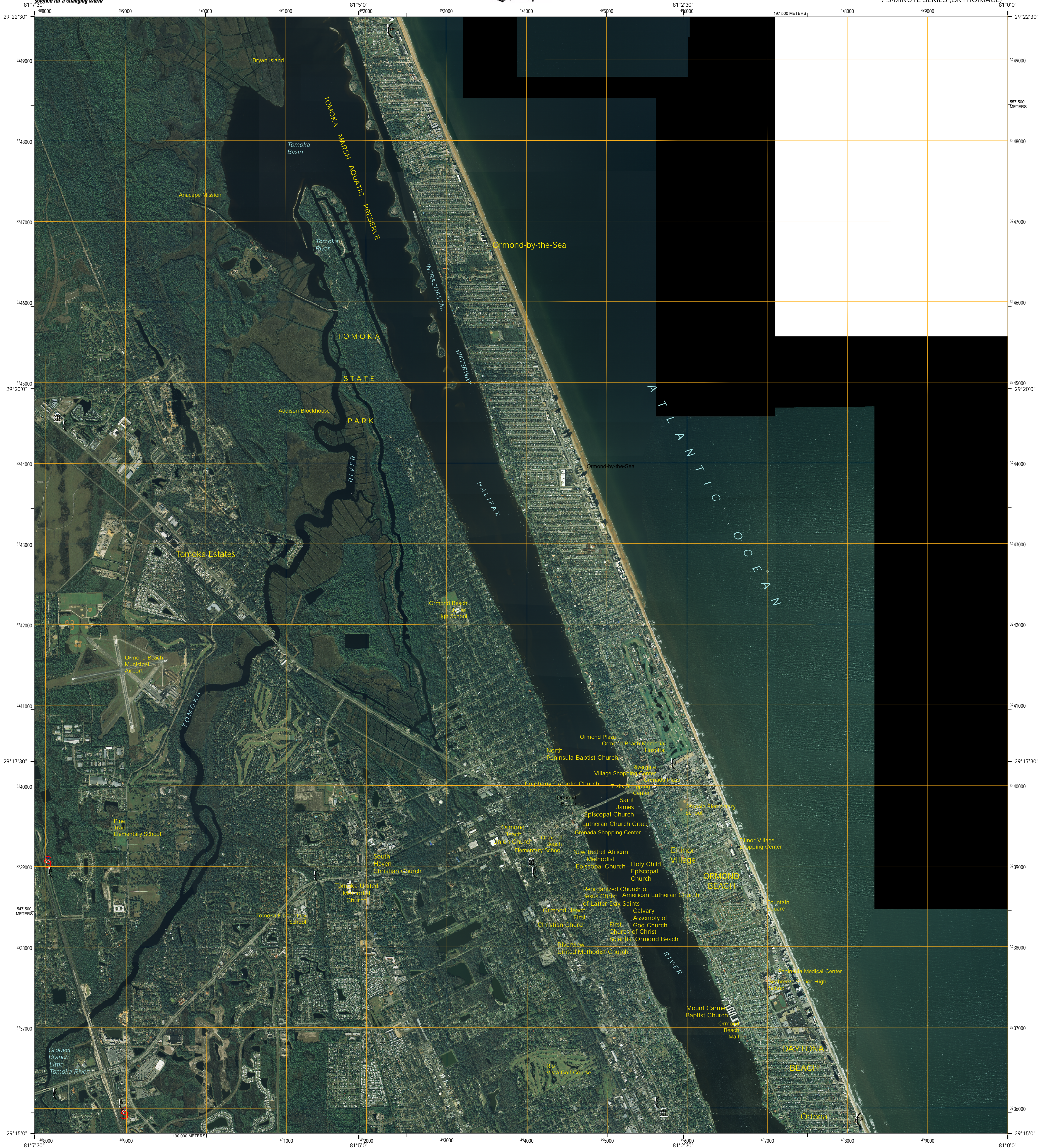




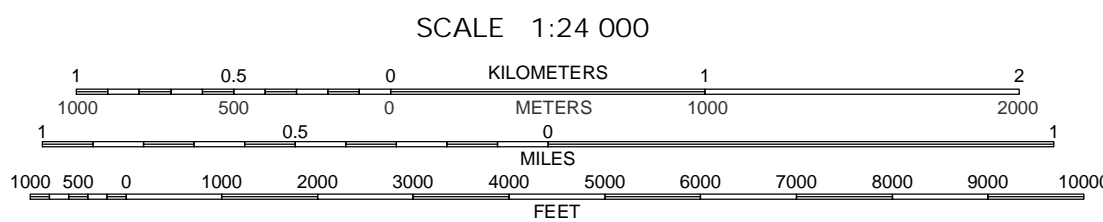
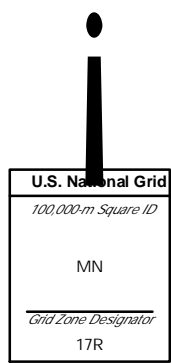
U.S. DEPARTMENT OF THE INTERIOR  
U.S. GEOLOGICAL SURVEY



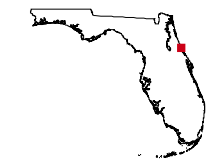
ORMOND BEACH QUADRANGLE  
FLORIDA-VOLUSIA CO.  
7.5-MINUTE SERIES (ORTHOIMAGE)



Produced by the United States Geological Survey  
World Geodetic System of 1984 (WGS84)  
Equirectangular projection with standard parallel at center of sheet  
1 000-meter Universal Transverse Mercator grid, zone 17  
2 500-meter grid ticks: Florida Coordinate System of 1983, east zone  
UTM grid declination, 0° 02' west  
2007 Magnetic declination, 5° 42' west  
Imagery.....Digital Orthophoto Quadrangle.....USGS, 2001  
Transportation.....CENSUS, 2004  
Names.....Geographic Names Information System, 1999



THIS MAP COMPLIES WITH NATIONAL MAP ACCURACY STANDARDS



FLORIDA  
QUADRANGLE LOCATION

Flagler Beach West	Flagler Beach East
Favorita	Ormond Beach
Daytona Beach NW	Daytona Beach
	Port Orange

ADJOINING 7.5' QUADRANGLES

Interstate Route U.S. Route State Route

ORMOND BEACH, FL

2007