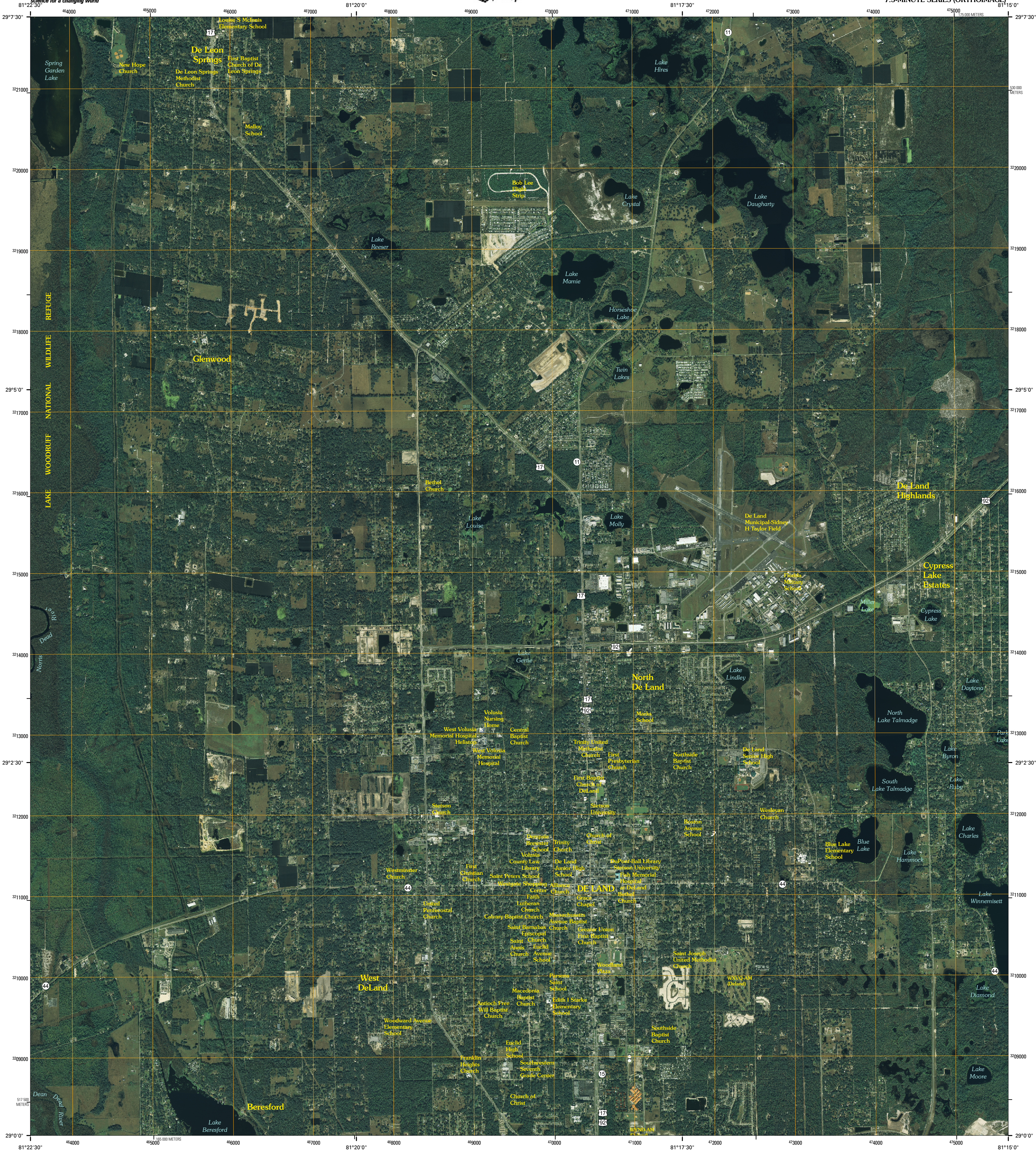




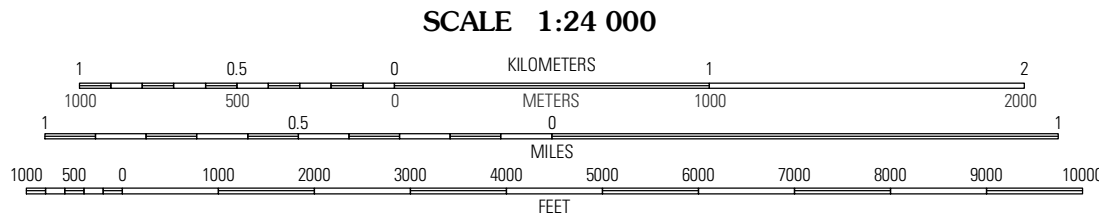
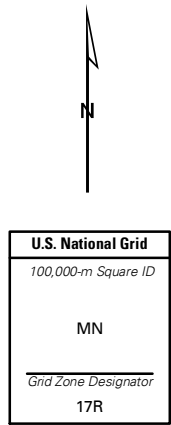
U.S. DEPARTMENT OF THE INTERIOR
U.S. GEOLOGICAL SURVEY



DE LAND QUADRANGLE
FLORIDA-VOLUSIA CO.
7.5-MINUTE SERIES (ORTHOIMAGE)



Produced by the United States Geological Survey
World Geodetic System of 1984 (WGS84)
Equiarectangular projection with standard parallel at center of sheet
1 000-meter Universal Transverse Mercator grid, zone 17
2 500-meter grid ticks: Florida Coordinate System of 1983, east zone
UTM grid declination, 0° 09' west
2007 Magnetic declination, 5° 29' west
Imagery.....Digital Orthophoto Quadrangle.....USGS, 2001
Transportation.....CENSUS, 2004
Names.....Geographic Names Information System, 1999



THIS MAP COMPLIES WITH NATIONAL MAP ACCURACY STANDARDS



FLORIDA
QUADRANGLE LOCATION

Person	Lake Diss	Daytona Beach NW
Lake Woodruff	De Land	Daytona Beach SW
Pine Lakes	Orange City	Lake Helen

ADJOINING 7.5 QUADRANGLES

Interstate Route U.S. Route State Route

DE LAND, FL

2007