

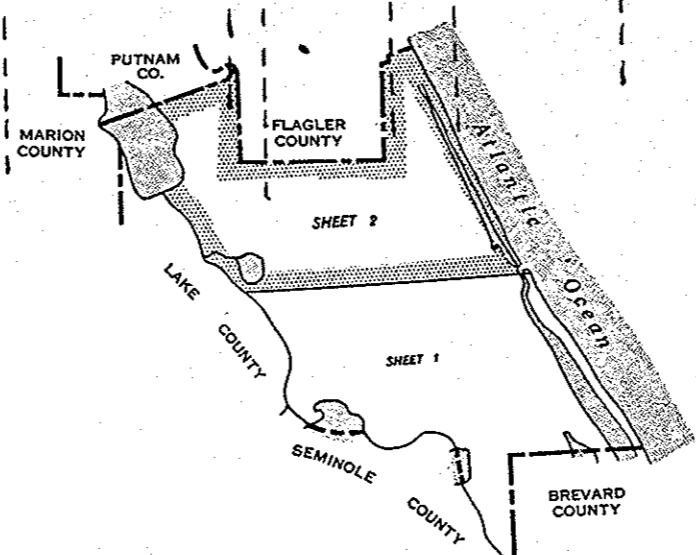
3122

3359

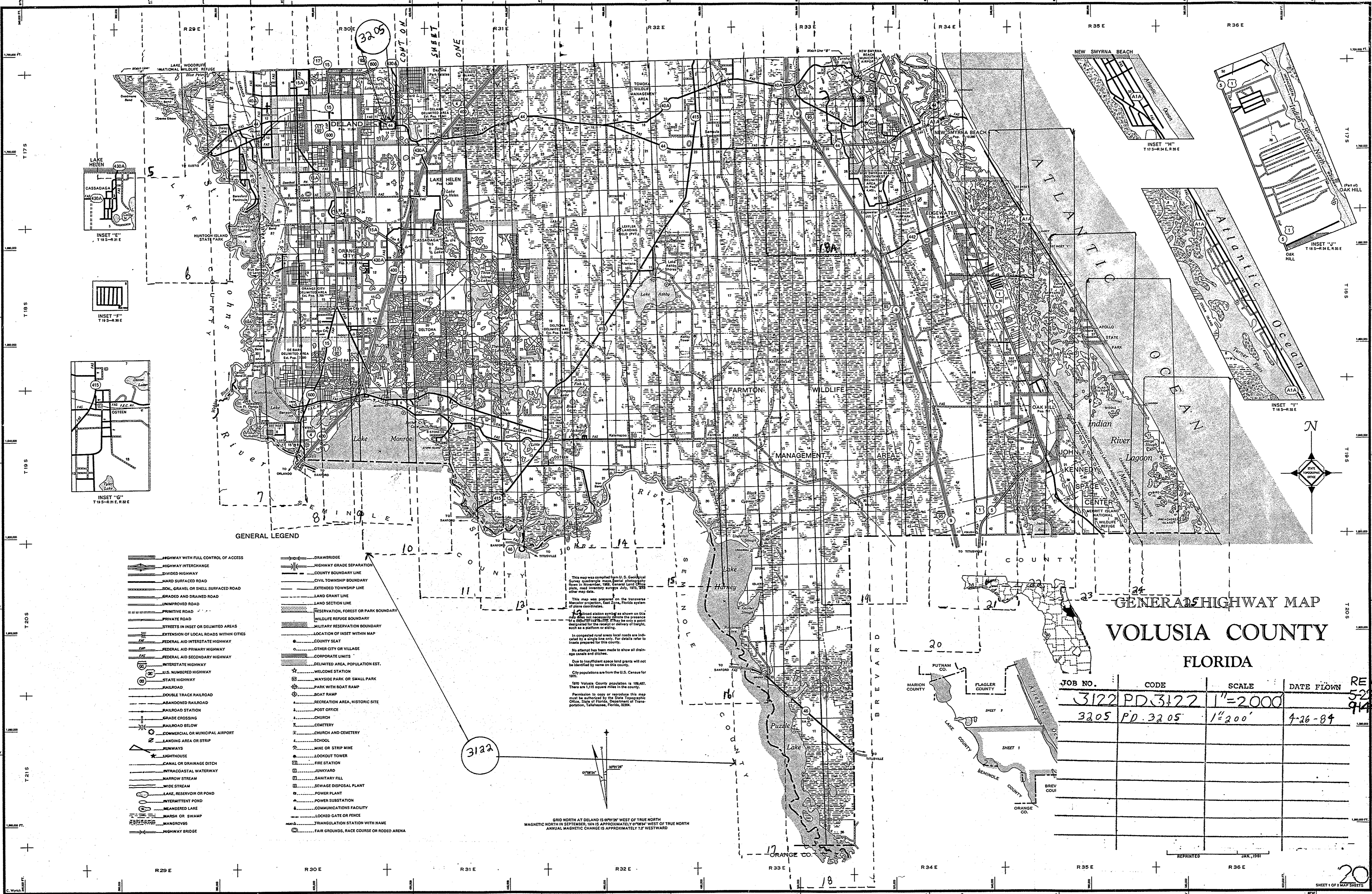
3487

**GENERAL HIGHWAY MAP
VOLUSIA COUNTY**

JOB NO.	CODE	SCALE	DATE FLOWN	REV
3122	PD 3122	1"=2000'		5-22-84
3359	PD 3359	1"=200'	5-8-85	
3487	PD 3487	1"=1600'	1-31-86	



Maps of maps are made at and resal
Permi
be autho
Departme
32901.



GENERAL LEGEND

- HIGHWAY WITH FULL CONTROL OF ACCESS
- HIGHWAY INTERCHANGE
- DIVIDED HIGHWAY
- HARD SURFACED ROAD
- SOIL, GRAVEL OR SHELL SURFACED ROAD
- GRADED AND DRAINED ROAD
- UNIMPROVED ROAD
- PRIMITIVE ROAD
- PRIVATE ROAD
- STREETS IN INSET OR DELIMITED AREAS
- EXTENSION OF LOCAL ROADS WITHIN CITIES
- FEDERAL AID INTERSTATE HIGHWAY
- FEDERAL AID PRIMARY HIGHWAY
- FEDERAL AID SECONDARY HIGHWAY
- INTERSTATE HIGHWAY
- U.S. NUMBERED HIGHWAY
- STATE HIGHWAY
- RAILROAD
- DOUBLE TRACK RAILROAD
- ABANDONED RAILROAD
- RAILROAD STATION
- GRADE CROSSING
- RAILROAD BELOW
- COMMERCIAL OR MUNICIPAL AIRPORT
- LANDING AREA OR STRIP
- RUNWAYS
- LIGHTHOUSE
- CANAL OR DRAINAGE DITCH
- INTRACOASTAL WATERWAY
- NARROW STREAM
- WIDE STREAM
- LAKE, RESERVOIR OR POND
- INTERMITTENT POND
- MEADOWED LAKE
- MARSH OR SWAMP
- MANGROVES
- HIGHWAY BRIDGE
- DRAWBRIDGE
- HIGHWAY GRADE SEPARATION
- COUNTY BOUNDARY LINE
- CIVIL TOWNSHIP BOUNDARY
- EXTENDED TOWNSHIP LINE
- LAND GRANT LINE
- LAND SECTION LINE
- RESERVATION, FOREST OR PARK BOUNDARY
- WILDLIFE REFUGE BOUNDARY
- MILITARY RESERVATION BOUNDARY
- LOCATION OF INSET WITHIN MAP
- COUNTY SEAT
- OTHER CITY OR VILLAGE
- CORPORATE LIMITS
- DELIMITED AREA, POPULATION EST.
- WELCOME STATION
- WAYSIDE PARK OR SMALL PARK
- PARK WITH BOAT RAMP
- BOAT RAMP
- RECREATION AREA, HISTORIC SITE
- POST OFFICE
- CHURCH
- CEMETERY
- CHURCH AND CEMETERY
- SCHOOL
- MINE OR STRIP MINE
- LOOKOUT TOWER
- FIRE STATION
- JUNKYARD
- SANITARY FILL
- SEWAGE DISPOSAL PLANT
- POWER PLANT
- POWER SUBSTATION
- COMMUNICATIONS FACILITY
- LOCKED GATE OR FENCE
- TRIANGULATION STATION WITH NAME
- FAIR GROUNDS, RACE COURSE OR RODEO ARENA

3122

This map was compiled from U. S. Geological Survey quadrangle maps, aerial photography from November, 1959, General Land Office plans, road inventory surveys July, 1972, and other map data.

This map was prepared on the transverse Mercator projection, East Zone, Florida system of plane coordinates.

Isolated station symbols as shown on this map do not necessarily denote the presence of a 4000-foot contour. If there is any point designated for the removal or delivery of freight, such as a platform or siding.

No attempt has been made to show all drainage canals and ditches.

Due to insufficient space land grants will not be identified by name on this county.

City populations are from the U.S. Census for 1970.

1970 Volusia County population is 109,487. There are 1,115 square miles in the county.

Permission to copy or reproduce this map must be authorized by the State Topographic Office, State of Florida, Department of Transportation, Tallahassee, Florida, 32304.

GRID NORTH AT DELAND IS 0°09'28" WEST OF TRUE NORTH
MAGNETIC NORTH IN SEPTEMBER, 1978 IS APPROXIMATELY 0°04' WEST OF TRUE NORTH
ANNUAL MAGNETIC CHANGE IS APPROXIMATELY 7" WESTWARD

GENERAL HIGHWAY MAP
VOLUSIA COUNTY
FLORIDA

JOB NO.	CODE	SCALE	DATE FLOWN	REV
3122	PD-3122	1"=2000'		5-28-84
3205	PD-3205	1"=200'	4-26-84	9-14-84

